



**Summit County Public Health  
Influenza Surveillance Report  
2023 – 2024 Season  
Report #23**



**Flu Surveillance Weeks 24 & 25 (3/10/2024 to 3/23/2024)  
Centers for Disease Control and Prevention MMWR Weeks 11 & 12**

**Summit County Surveillance Data:**

In **Weeks 24 & 25** of influenza surveillance, influenza-related activity was low<sup>1</sup> in Summit County.

Table 1: Overall Influenza Activity Indicators in Summit County by week				
	Week 24 MMWR 11 N (%) <sup>1</sup>	Week 25 MMWR 12 N (%) <sup>1</sup>	Percent change from previous week	Number of weeks increasing or decreasing
<b>Lab Reports: Influenza</b>				
<u>Test Performed</u>	1090	900	-17.4%	3↓
<u>Positive Tests (Number and %)</u>	208 (19.1%)	122 (13.6%)	-29.0%	3↓
Influenza A (Number and %)	101 (9.3%)	69 (7.7%)	-17.3	4↓
Influenza B (Number and %)	107 (9.8%)	53 (5.9)	-40.0%	3↓
<b><u>Acute care hospitalizations for Influenza:</u></b>	22	9	-59.1%	4↓
<b>Schools absenteeism<sup>2</sup></b>	9.4	10.4	10.5%	1↑
<b>Deaths (occurred in Summit County)</b>				
Pneumonia associated	8	5	-37.5%	1↓
<u>Influenza associated</u>	0	0	-	NC
COVID-19 associated	2	3	50.0%	1↑
<b>Emergency room visits (EpiCenter)<sup>3</sup> (Figure 3)**</b>				
Total ED Visits	3997	3739	-6.5%	3↓
Constitutional Complaints	328	284	-7.4%	5↓
<u>Fever and ILI</u>	25	33	41.1%	1↑
<p>2) Absence is for any reason. Percent is from total number of students enrolled. Data was collected from approx. 9 schools or school districts throughout Summit County (n = approx. 32,000 students)</p> <p>3)** Percent is from total number of emergency room interactions – elimination of data from a significant reporting facility has resulted in decreases in current and previous week data. <b>Notable changes in Epicenter data are the result of a change in reporting practices from at least one of the reporting facilities. **These figures should not be compared to previous year's reports**</b> Notable decrease/ elimination of ER Related data may be the result of a reporting delay and not reflective of actual trends. <b>This will be revised in future reports.</b></p> <p><b>Note:</b> Data is provisional and may be updated as more information is received. Percentages should be interpreted with caution. Small changes in number can result in large changes in percent. When a percentage, or prevalence, is available in this table, the percent change will be calculated from those values</p>				

**Lab reports:** During week 24 and 25 of influenza surveillance, reporting Summit County facilities performed 1,990 flu tests, of which 330 had positive results. (Figure 4) Note: *Influenza data are collected from selected reporting partners and do not represent positivity rates for the entire county.*

**Acute Care Hospitalizations:** There were 22 reported admissions during week 24. 9 admissions for week 25. Figure 2 displays hospitalizations in Summit County.

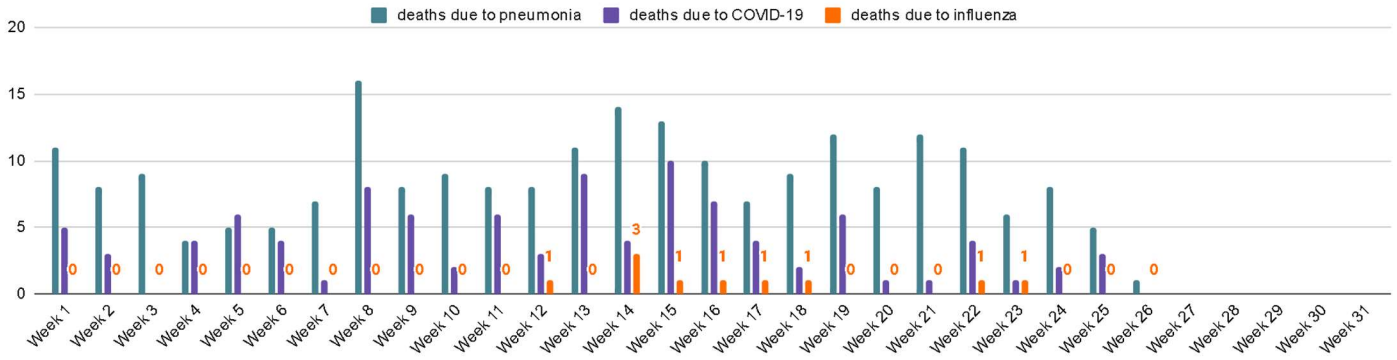
**School absenteeism** includes absences regardless of reason. The absence rate increased from week 24 to 25.

0 deaths related to influenza, 5 COVID-19 related deaths and 13 pneumonia related deaths occurred in Summit County during week 24 and 25. Influenza associated deaths remained at 0, COVID-19 associated deaths increased and pneumonia associated deaths decreased.

Figure 1 displays weekly counts of deaths occurring in Summit County associated with pneumonia, COVID-19 and influenza.

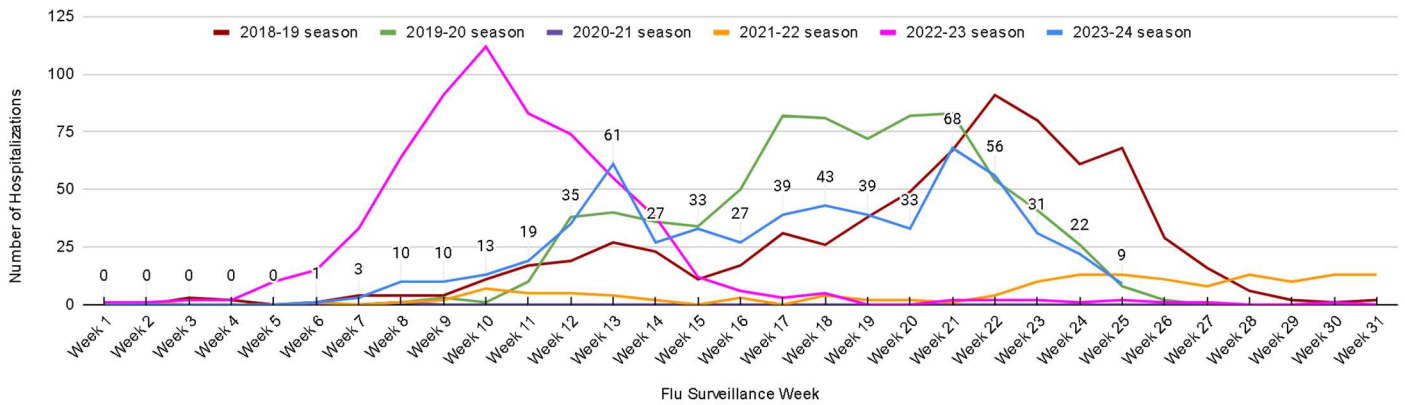
<sup>1</sup>The measure of 'influenza-related activity in Summit County' will be determined based on week to week comparison of underlined table 1 indicators. The scale is as follows: 1/5 indicators increase (very low), 2/5 indicators increase (low), 3/5 indicators increase (moderate), 4/5 indicators increase (high), 5/5 indicators increase (very high).

**Figure 1. Weekly Summit County death counts associated with pneumonia and influenza during 2023-2024 season**



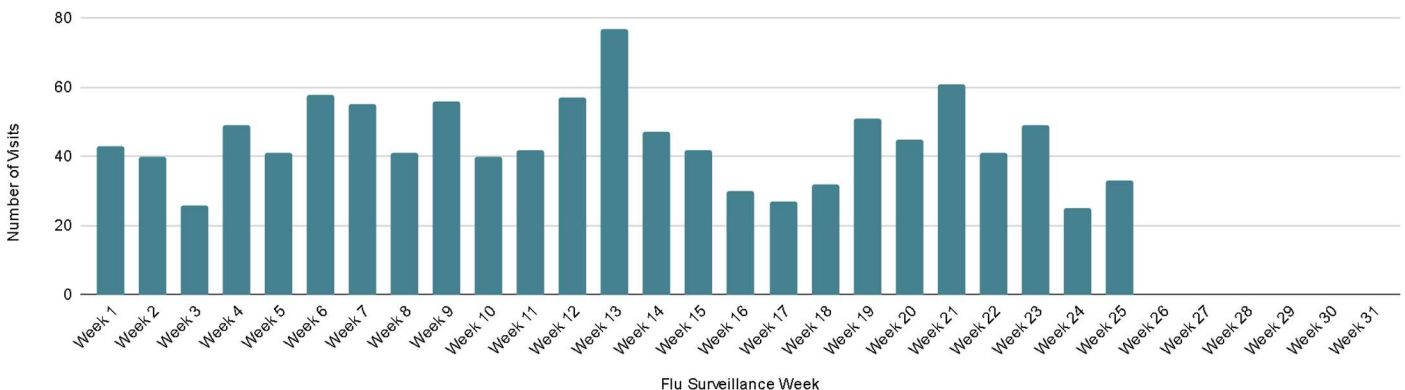
**Hospitalizations:** In Week 24, Summit County hospitals reported 22 influenza-associated hospitalizations, 9 hospitalizations were reported during Week 25. **Figure 2** displays weekly confirmed hospitalization counts for Summit County.

**Figure 2. Summit County weekly influenza-associated hospitalizations, 2023-2024 season and previous five seasons**

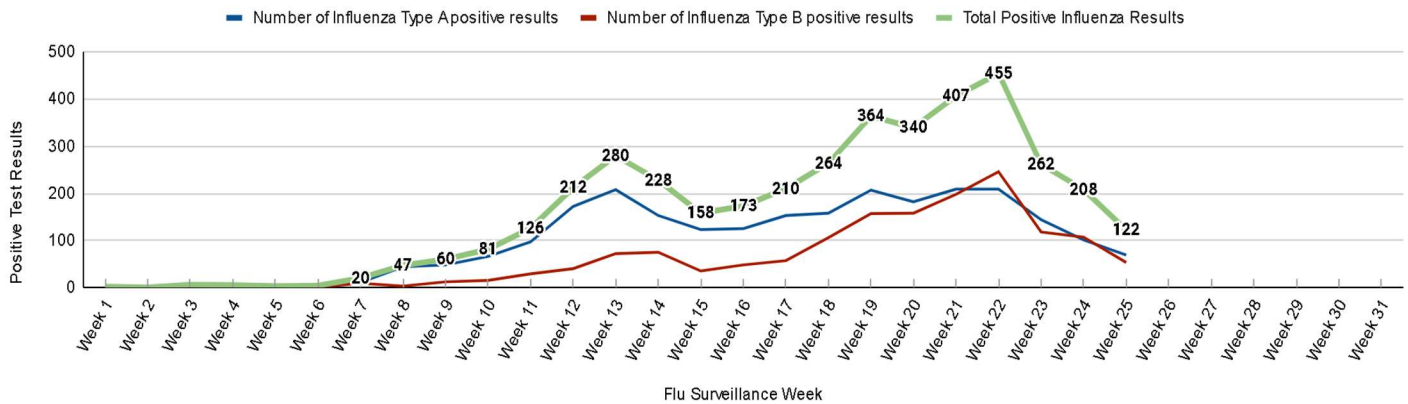


**EpiCenter** collects and analyzes health related data in real time to provide information about the health of the community. This system tracks ER visits related to constitutional complaints and fever and ILI. **Figure 3** displays the weekly ER visits related to ILI and flu symptoms in Summit County. **\*\*A significant number of ER visits are expected to be unaccounted for due to limited reporting partner participation. As a result, these figures should not be compared to previous year's reports.\*\***

**Figure 3. Weekly ED visits in Summit County related to Fever + ILI reported in EpiCenter, 2023 to 2024 season**



**Figure 4. Influenza diagnostic tests with positive results completed by Summit County health facilities, 2023 - 2024 season**



**Ohio Influenza Activity: from the Ohio Department of Health:**

Current Ohio Activity Level (Geographic Spread) – **High**

**Ohio Department of Health Seasonal Influenza Activity Summary Week ending on 3/23/2024**

Activity Indicators (Week ending on 3/23/2024)				
Data Source	Current Week	Percent Change from last week	Trend Direction	Above 5 yr Average <span style="color: red;">█</span> 5 yr Average <span style="color: gray;">█</span> Below 5 yr Average <span style="color: blue;">█</span> Current Season Percent <span style="color: orange;">█</span>
<b>% of Outpatient Visits</b> Influenza-like Illness (ILI) Outpatient Data (ILINet Sentinel Provider Visits)	4.08%	-17.07%	↓	
<b>Thermometer Sales</b> (National Retail Data Monitor)	0.24%	-27.27%	↓	
<b>% of Emergency Department (ED) Visits</b> Fever and ILI Specified ED Visits (EpiCenter)	1.63%	-9.44%	↓	
<b>% of ED Visits</b> Constitutional ED Visits (EpiCenter)	10.52%	-7.72%	↓	
<b>Hospitalizations</b> Confirmed Influenza a-associated Hospitalizations (Ohio Disease Reporting System)	392	-28.07%	↓	

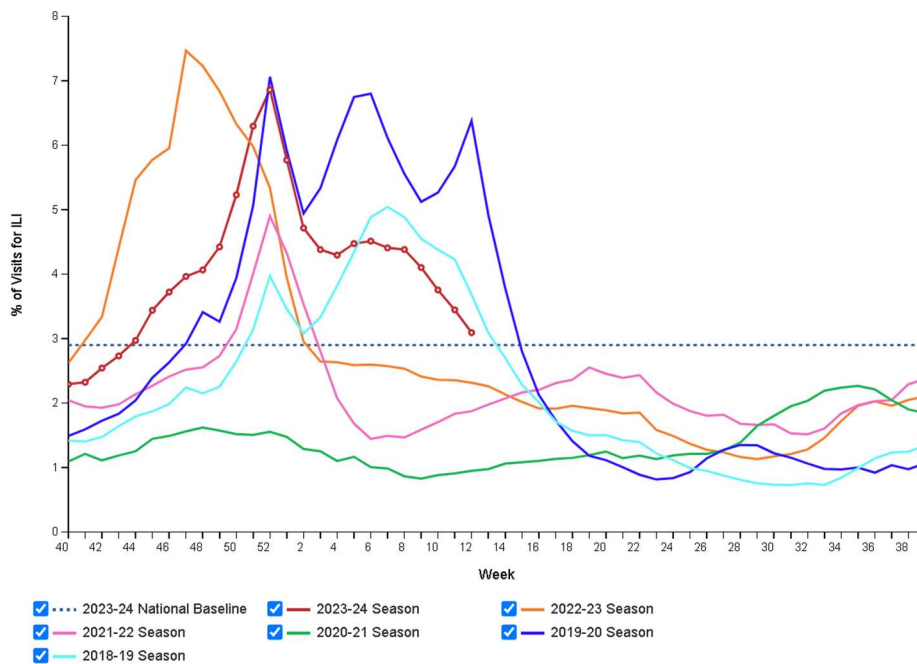
Details pertaining to the table above as well as other Ohio Influenza data can be found here → Source: <https://odh.ohio.gov/know-our-programs/seasonal-influenza/influenza-dashboard>

# National Surveillance: from Centers for Disease Control and Prevention (CDC):

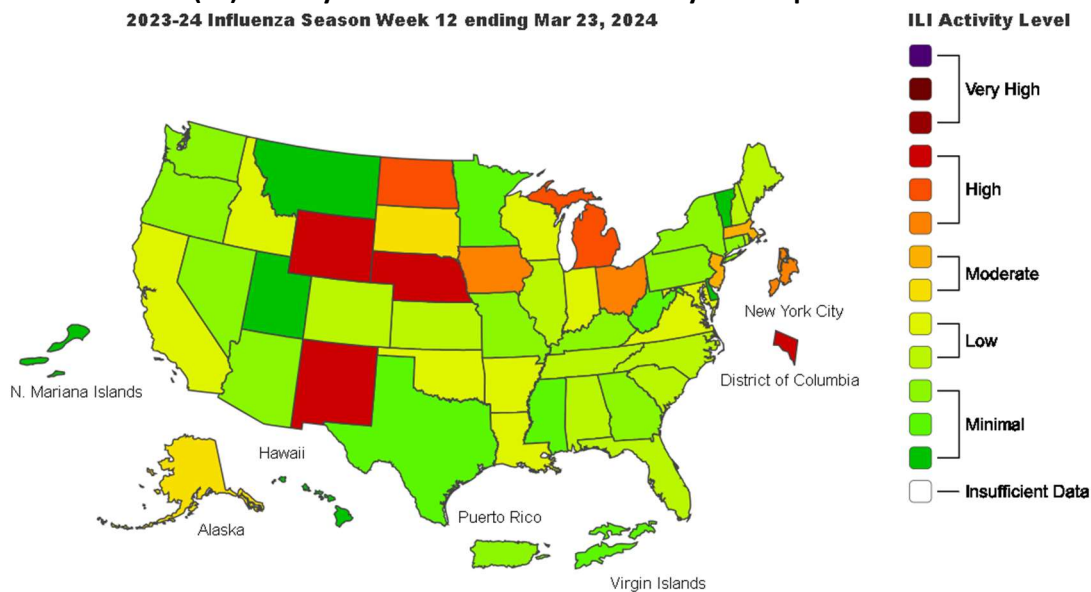
## National Outpatient Illness Surveillance:

Nationally, during Week 12, 3.1% of patient visits reported through ILINet were due to respiratory illness that included fever plus a cough or sore throat, also referred to as ILI. This has decreased (change of >0.1 percentage points) for the fourth consecutive week but remains above the national baseline. The percentage of visits for ILI remained stable in regions 2 and 9 and decreased in all other regions in Week 12 compared to Week 11. Regions 2, 4, 6 and 8 are below their baseline, and regions 1, 3, 5, 7, 9, and 10 are at or above their respective baselines. Multiple respiratory viruses are co-circulating, and the relative contribution of influenza virus infection to ILI varies by location.

**Figure 5. Percentage of Outpatient Visits for Respiratory Illness reported By the U.S. Outpatient Influenza-like Illness Surveillance Network (ILINet), Weekly National Summary, 2023-2024 and Selected Previous Seasons.**



**Figure 6. Influenza-like illness (ILI) activity level indicator determined by data reported to ILINet 2023-24 Influenza Season Week 12 ending Mar 23, 2024**



Source: <https://www.cdc.gov/flu/weekly/>



# Global Surveillance:

Influenza Update N° 467 20 March 2024, based on data up to 10 March 2024

## Influenza Summary

- Influenza activity continued to decline in most countries in the Northern Hemisphere, although small increases were reported in some countries in North Africa and Central America and the Caribbean. Influenza A viruses predominated with A(H1N1)pdm09 predominant among the subtyped influenza A viruses, with differences by influenza transmission zone.
- In the Southern Hemisphere, influenza activity is generally low, although some countries in Tropical South America and South East Asia reported increases in activity since the prior week. Influenza A viruses predominated with differences by influenza transmission zone.

Figure 7. Proportion of sentinel specimens testing positive for influenza

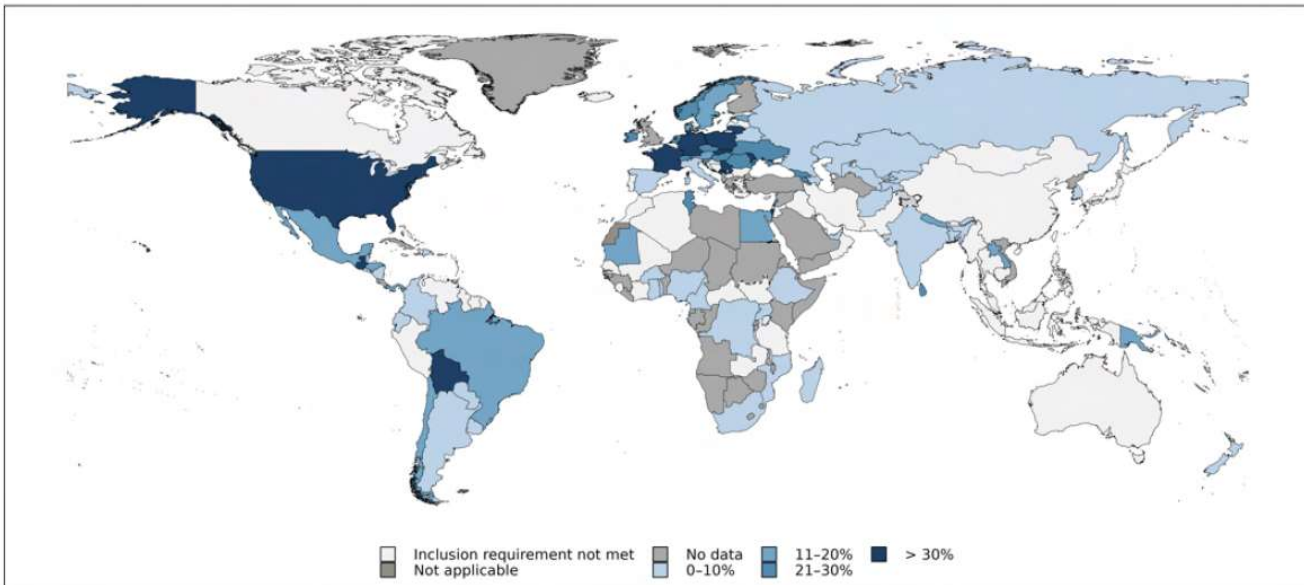
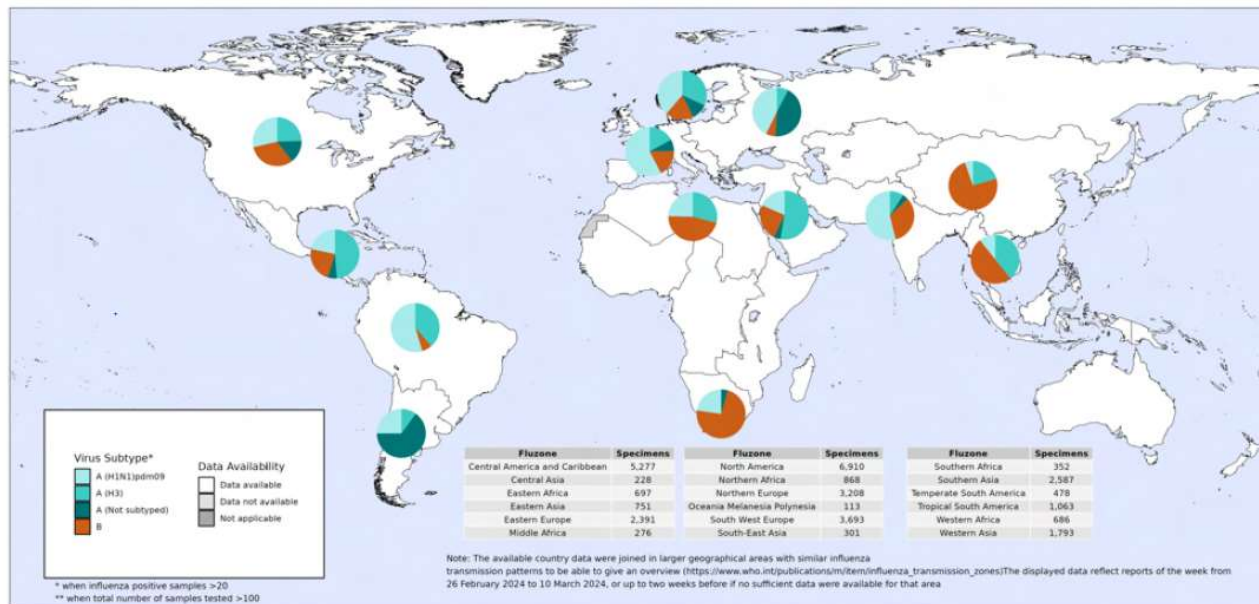


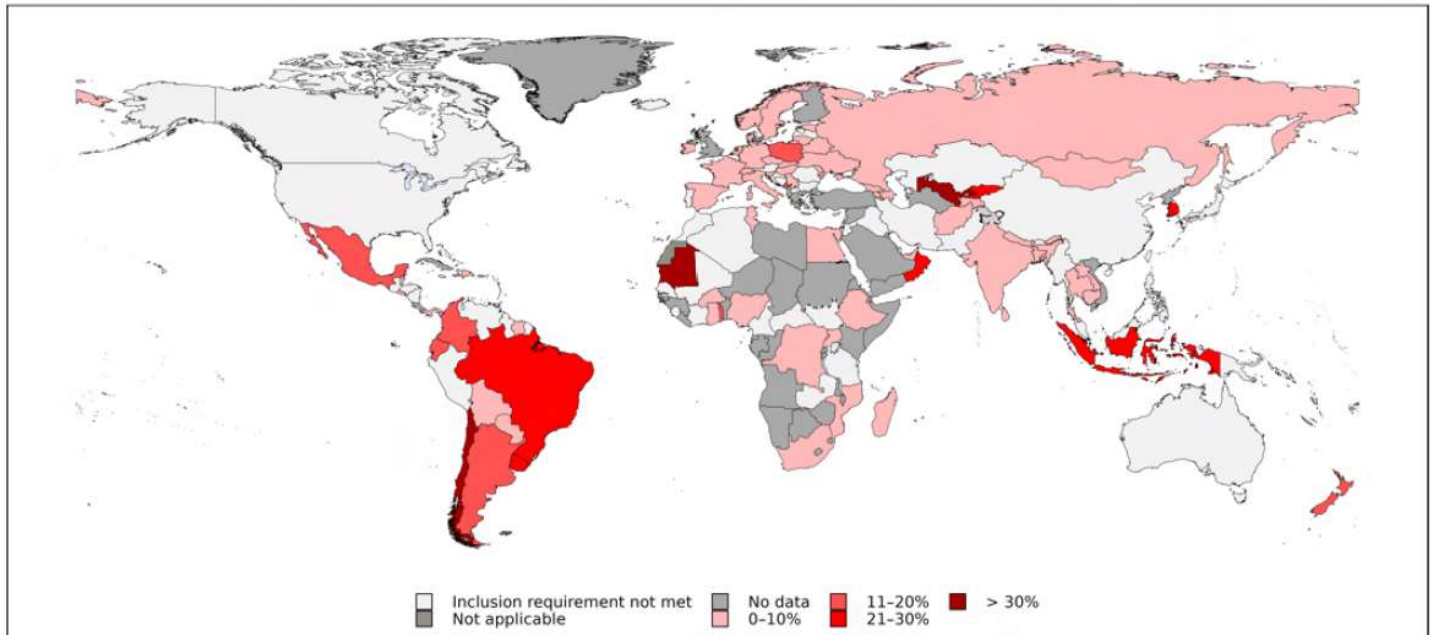
Figure 8. Sentinel specimens testing positive for influenza by subtype, as reported in FluNet



## SARS-CoV-2 Summary

- SARS-CoV-2 activity remains elevated in South America and in some countries in Eastern Europe, Central Asia, Western Africa, South East Asia, and Oceania. Increases in activity have been reported in South America, Eastern Europe, Central Asia, and Western Africa since the prior week.

**Figure 9. Proportion of sentinel specimens testing positive for SARS-CoV-2**



Source: <https://www.who.int/publications/m/item/influenza-update-n--467>

**About this report:** Reporting agencies include labs, hospitals, long-term care and community-based care providers, physician offices, university clinic, pharmacies, and schools. Agencies are distributed throughout Summit County and report different indicators of flu activity including total lab tests, numbers of positive tests and type, antiviral prescriptions filled, school absences, and influenza like illness (ILI). Hospitalizations are lab confirmed for influenza and are obtained from the Ohio Disease Reporting System. Number of deaths associated with influenza and pneumonia are gathered from the Summit County Office of Vital Records death listings. Emergency room visits for complaints related to influenza are obtained by syndromic surveillance system (Epicenter).

**Special thanks to all agencies who report Influenza related data weekly.**

Reporting from participants may not be complete each week. Numbers may change as updated reports are received. For questions, please contact Julie Zidones at the Summit County Public Health Communicable Disease Unit (330-375-2662 or [cdu@schd.org](mailto:cdu@schd.org)). This report was issued on March 29, 2024